

HESTIA
RESIDENCE

— PENTHOUSES —

Discover your new home



DISCOVER
YOUR NEW HOME

A choice of 1, 2 and 3 bedrooms apartments all with pleasant living spaces designed for enjoyment, incorporating maximum quality in each design and finish. Spacious living room and large terraces, integrate the outdoors with the interior of each home.

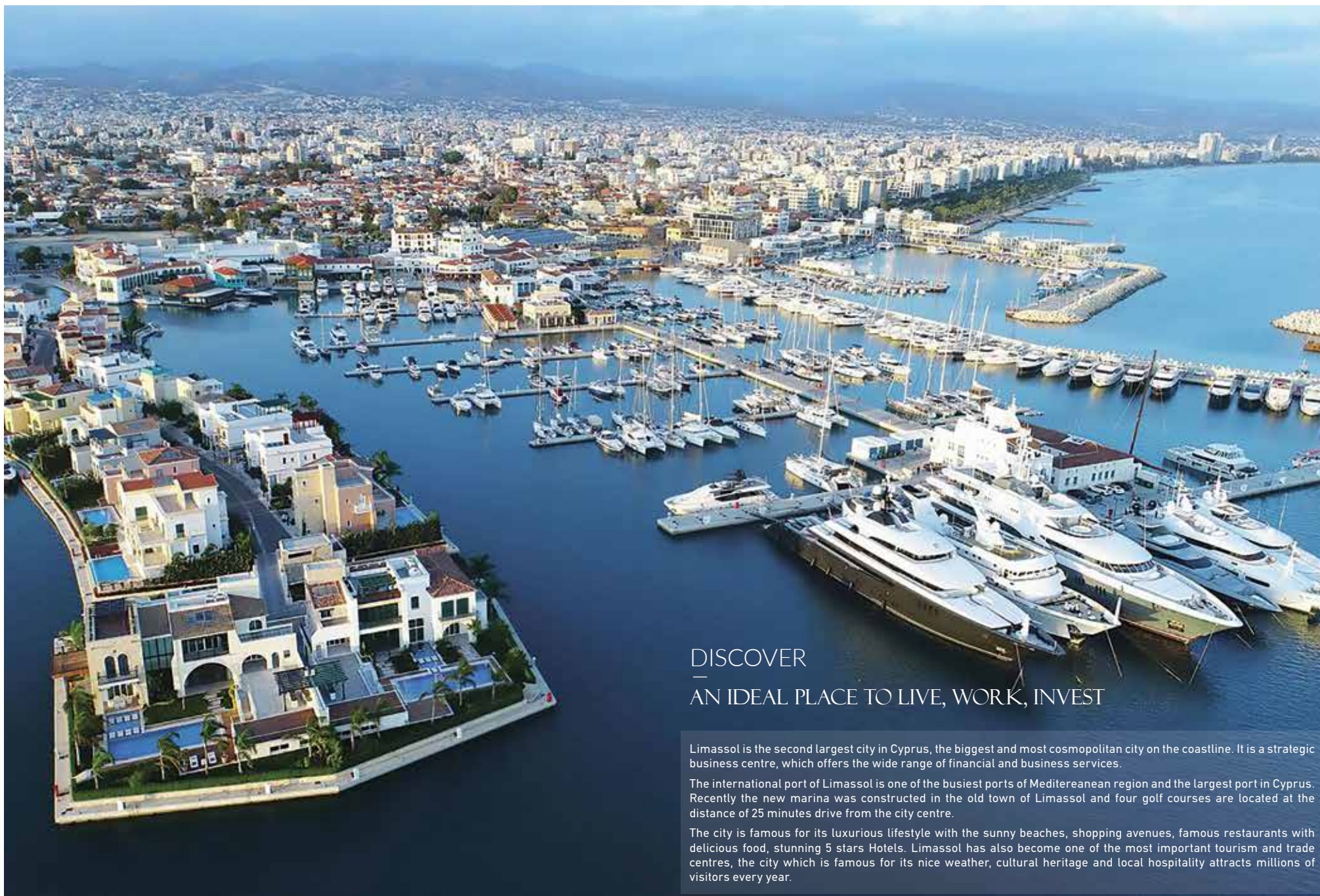
Common exterior areas are developed with high-quality materials, creating a distinguished and warm welcoming environment. Closed-circuit television (CCTV), for all indoor and outdoor common areas offer residents added peace of mind.

The private gated complex with private secured parking with remote access, landscaped green areas provide a lush oasis within this urban setting. Residents enjoy access to private gym facilities for wellbeing and fitness, just some of the facilities the Hestia Residence has to offer.





the exterior



DISCOVER — AN IDEAL PLACE TO LIVE, WORK, INVEST

Limassol is the second largest city in Cyprus, the biggest and most cosmopolitan city on the coastline. It is a strategic business centre, which offers the wide range of financial and business services.

The international port of Limassol is one of the busiest ports of Mediterranean region and the largest port in Cyprus. Recently the new marina was constructed in the old town of Limassol and four golf courses are located at the distance of 25 minutes drive from the city centre.

The city is famous for its luxurious lifestyle with the sunny beaches, shopping avenues, famous restaurants with delicious food, stunning 5 stars Hotels. Limassol has also become one of the most important tourism and trade centres, the city which is famous for its nice weather, cultural heritage and local hospitality attracts millions of visitors every year.





PRIVILEGED LOCATION

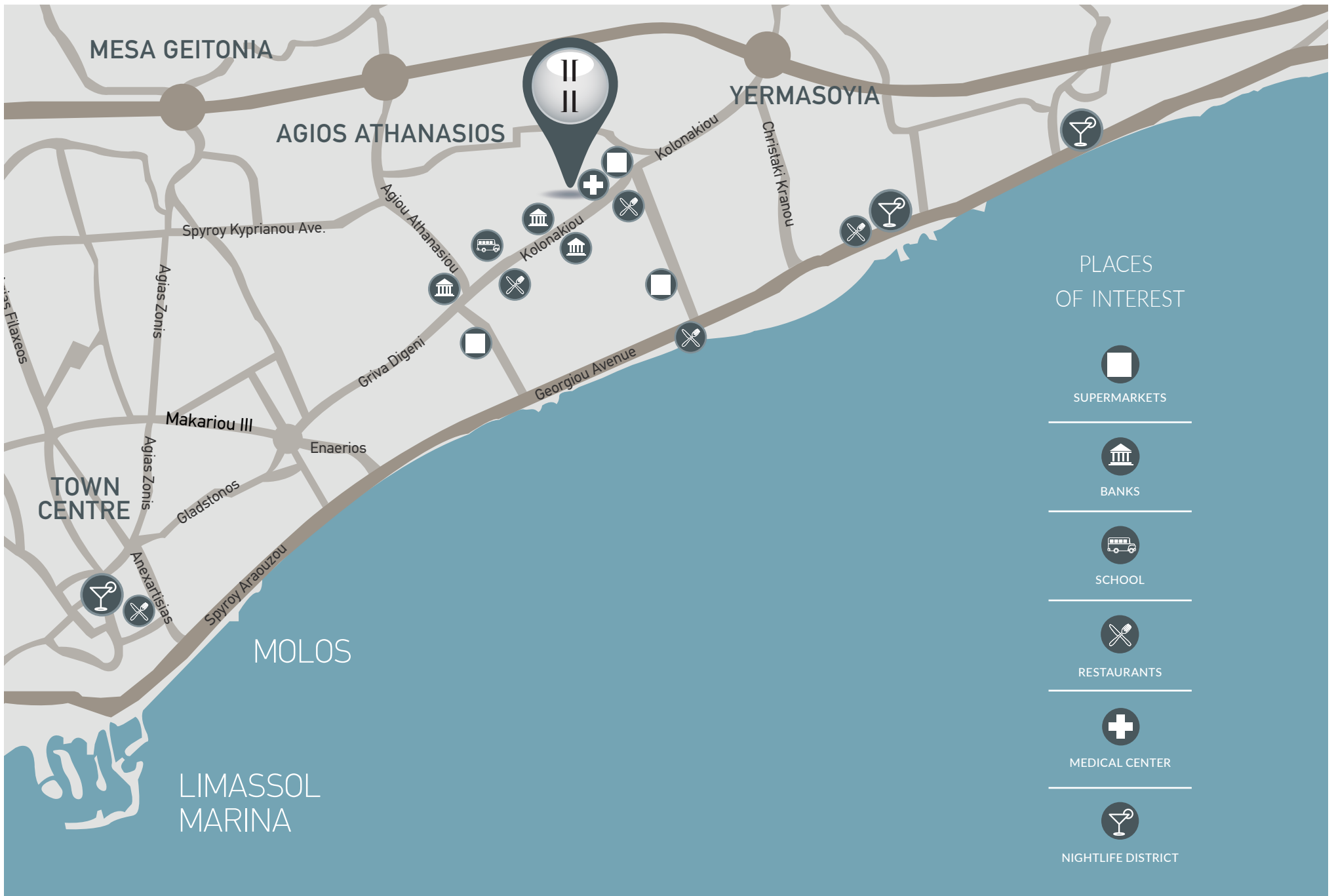
HESTIA Residence is situated in the privileged Columbia area, in the heart of Limassol, and boasts close proximity to all kinds of amenities: shops, restaurants, cafés and is walking distance to the Limassol seafront.

Designed for people to work, live and relax, this exceptional location gives residents and their guests the complete Limassol experience in the centre of the city.

LOCATED AS FOLLOWS

SCHOOL	approx. 180m	SUPERMARKET	approx. 300m
MEDICAL CENTER	approx. 200m	BANKS	approx. 180m
RESTAURANTS	approx. 200m	BEACH	approx. 1000m







A HIGH LEVEL OF INTRICACY AND DETAIL

The approach for Hestia Residence is meticulous and measured, to reach the level of quality our apartments deserve and residents expect. Every last detail of the Hestia Residence has been designed with the utmost care and attention to detail.

An array of features for each home, include:

- › Electric under floor central heating with individual controls
- › Granite worktops
- › Mixers & taps (Grohe)
- › Pipe in pipe plumbing system
- › Fly screens on windows & patio doors
- › Italian / Spanish Porcelain flooring & tiling
- › Imported Custom designed kitchens & wardrobes
- › Sanitary ware (Laufen)
- › Pressurized water system
- › Solar panel water heating
- › Video Door Phone & Provision for smart home automation
- › Provisions for Energy efficient split unit air conditioning







EXCLUSIVE PENTHOUSES

Hestia Residence offers 2 exclusive 4 bedroom penthouses, with expansive terraces offering panoramic sea views of the Limassol coast line. These exquisite penthouses offer private roof terrace with private roof top swimming pool an additional studio room and entertainment area.









II

FOR YOUR CONVENIENCE
AND WELL BEING

II



SECURED GATED COMPLEX

A private, secured gated complex with closed-circuit television (CCTV), for all indoor and outdoor common areas, offer residents added peace of mind.



PRIVATE GYM

Conveniently located on the ground floor, Hestia Residence offers a state of the art gym equipment which every resident can enjoy access to, for well-being, fitness and stress relief.



SECURED PARKING

Private secured parking with remote access. Each apartment is entitled to one parking space with the exception of the penthouses which are entitled to two parking spaces.



LANDSCAPE GARDEN AREAS

Beautiful and attractive plants adorn the ground floor of Hestia Residence providing a lush oasis within this urban setting.



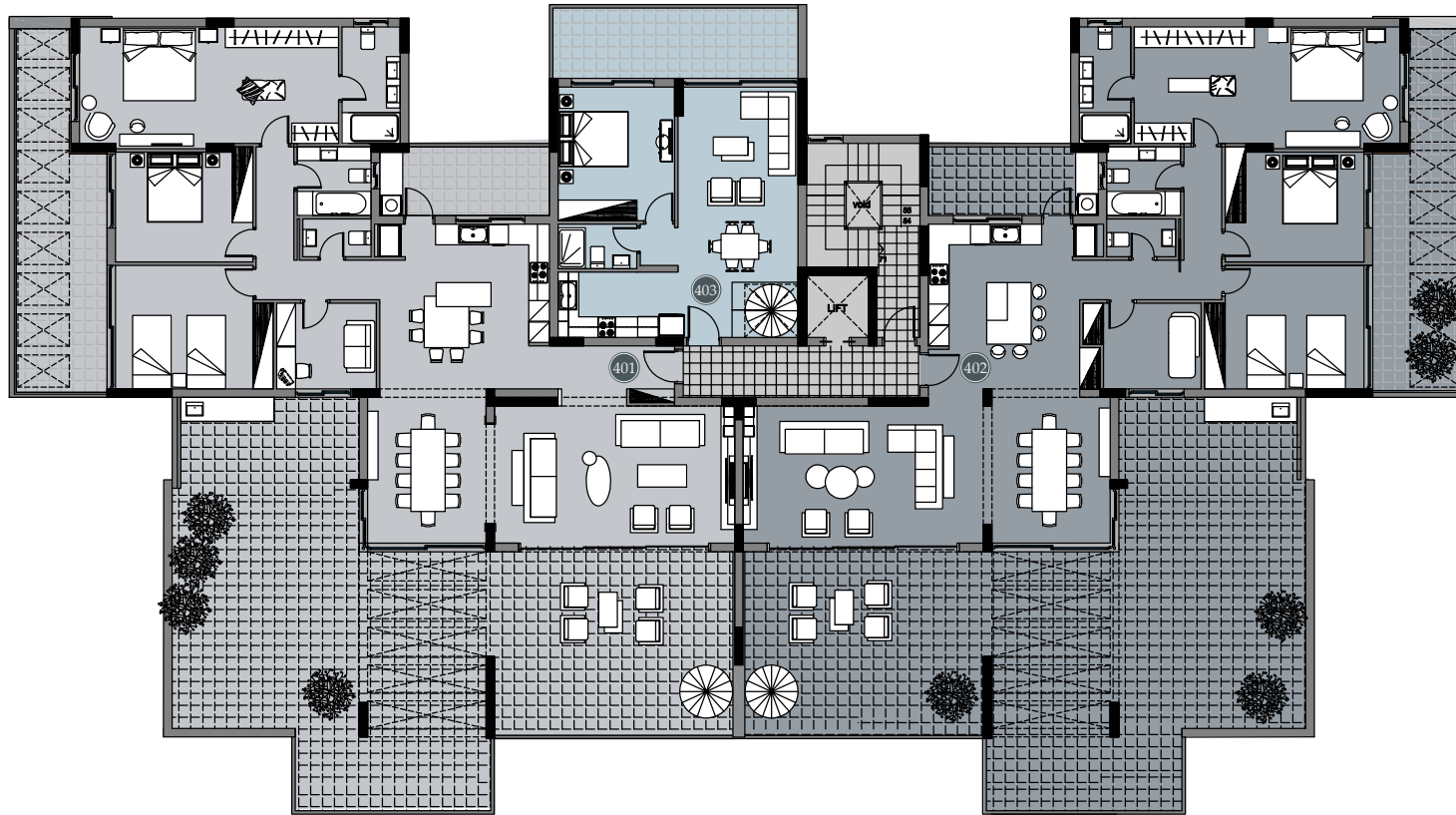
PRIVATE STORE ROOMS

Private and spacious storage rooms are located on the ground floor of Hestia Residence. Each apartment is entitled to its own private storage area.





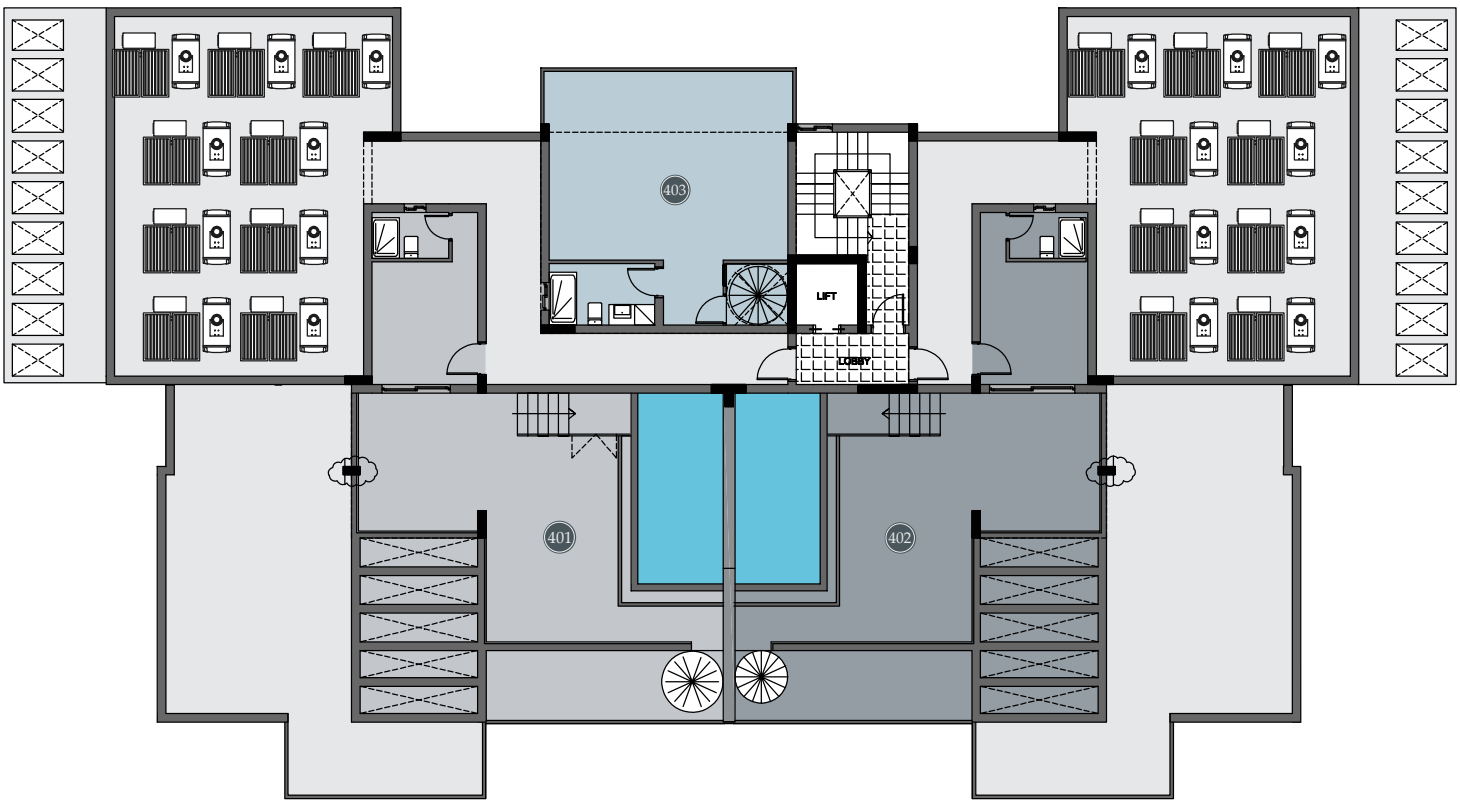




APARTMENT NO.	BEDROOMS	COVERED INDOOR AREA	COVERED VERANDA AREA	UN-COVERED VERANDA AREA	COMMON AREA	STORE AREA	TOTAL COVERED AREA	PARKING SPACES
401	4 + STUDIO	202m ²	35m ²	198+65m ²	27m ²	27m ²	291m ²	2
402	4 + STUDIO	193m ²	35m ²	145+65m ²	27m ²	27m ²	282m ²	2
403	1	52m ²	10m ²	55m ²	7m ²	5m ²	74m ²	2



4th FLOOR + roof terrace





T: 7000 3004 | +357 25325130 | F: +357 25389755 | E: info@stylianidesgroup.com
www.stylianidesgroup.com

HESTIA RESIDENCE

Whilst all care has been taken, the information contained herein is for indicative purposes and a guide only and does not constitute an offer, warranty or contract. All computer generated images and representations are indicative only. Changes may be made during the further planning or development stages, and thus subject to change without notice. E & O.E.