

Palm Residence

LUXURY APARTMENTS



STYLIANIDES
GROUP



LUXURIOUS ENVIRONMENT

A stunning new private estate of apartment residences, offering a modern and truly luxurious environment.



INFINITE POSSIBILITIES

“The Palm Residence”, consists of three buildings made up of 1, 2 & 3 bedroom apartments, and 3+1 bedroom Deluxe Penthouses offering private roof top pool and unobstructed sea views.



SURROUNDINGS

A sumptuous retreat surrounded by tranquil landscaped gardens, generous terraces, relaxation & entertainment areas and outdoor pool.

Designed to feel part of the vibrant town centre but with the utmost privacy in mind.











APARTMENT FEATURES :

- Under floor Central Heating
- Custom Designed Kitchens & Wardrobes
- Granite Worktops
- Porcelain flooring
- Sanitary Ware (Roca)
- Mixers & taps (Grohe)
- Fly Screens on Windows & Patio Doors
- Decorative ceilings with hidden lighting
- Security Door
- Video Phone Entry System
- Pressurized Water System
- Pipe in Pipe plumbing System
- Solar Panel Water Heating
- Thermal Insulation throughout
- Covered secured Parking
- Private Storeroom



AMENITIES :

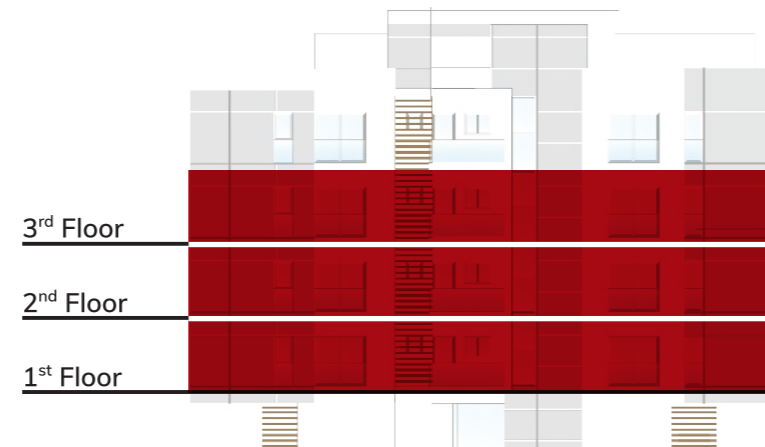
- Gated Secured Complex
- CCTV for all Common Areas
- Luxury entrance Lobby
- Decorative Architectural LED lighting for Common Areas
- Residence only Gym Facilities
- Overflow outdoor Swimming Pool
- Children's Pool
- Residence only Events/conference facilities
- BBQ entertainment area
- Children's playgrounds
- Fully Landscaped Garden areas
- Private Secured Parking for residents
- Property Management Services

SITE PLAN
BUILDING A, B, C



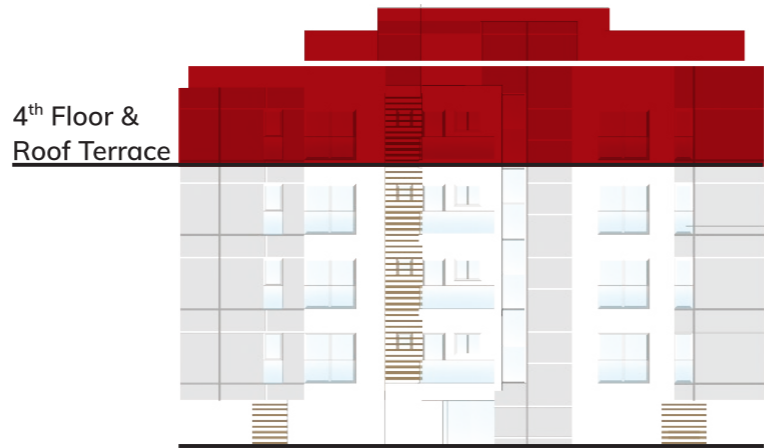
BUILDING A FLOORS 1, 2, 3

Apartment No.	101/ 201/ 301	102/ 202/ 203	103/ 203/ 303
Bedrooms	3	2	2
Covered Indoor Area M ²	118	97	91
Covered Veranda Area M ²	24	20	29
Store Room Area M ²	4.4	4.6	4.5
Covered Parking Spaces	1	1	1
Common Area M ²	19	16	15
Total Covered Area M ²	165.4	137.6	139.5



BUILDING A PENTHOUSES

Apartment No.	401	402
Bedrooms	3+1	3+1
Covered Indoor Area M ²	135	140
Covered Veranda Area M ²	35	45
Store Room Area M ²	8.4	6.3
Covered Parking Spaces	2	2
Roof Top Pool Area - (Uncovered) M ²	105	97
Common Area M ²	22	25
Total Covered Area M ²	200.4	216.3
Private Roof Top Pool	Yes	Yes



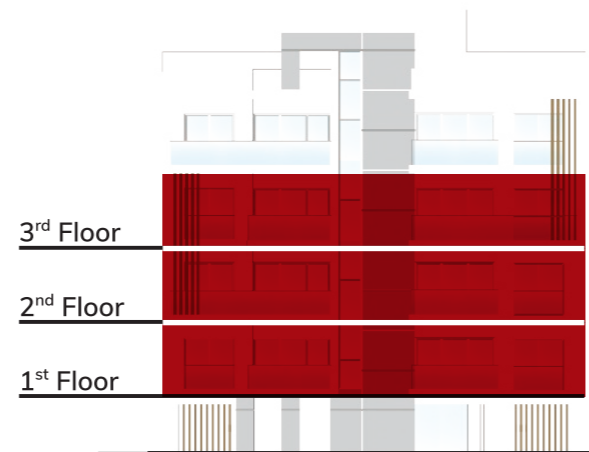


PENTHOUSES
ROOF TERRACE



BUILDING B FLOORS 1, 2, 3

Apartment No.	101/ 201/ 301	102/ 202/ 203	103/ 203/ 303	104/ 204/ 304
Bedrooms	1	1	2	2
Covered Indoor Area M ²	55	55	97	97
Covered Veranda Area M ²	14	14	30	30
Store Room Area M ²	3.7	3.7	6.8	6.8
Covered Parking Spaces	1	1	1	1
Common Area M ²	9	9	16	16
Total Covered Area M ²	81.7	81.7	149.8	149.8



BUILDING B PENTHOUSES

Apartment No.	401	402
Bedrooms	3 + 1	3 + 1
Covered Indoor Area M ²	150	150
Covered Veranda Area M ²	31	31
Store Room Area M ²	8.6	8.6
Covered Parking Spaces	2	2
Roof Top Pool Area - (Uncovered) M ²	124	124
Common Area M ²	23	23
Total Covered Area M ²	212.6	212.6
Private Roof Top Pool	Yes	Yes



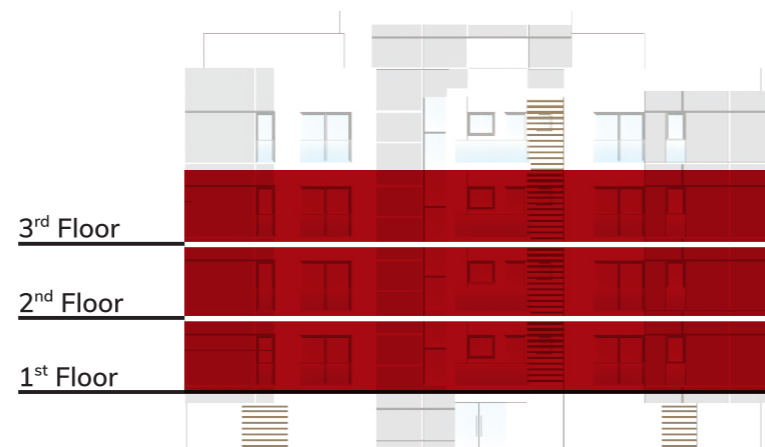


PENTHOUSES
ROOF TERRACE



BUILDING C FLOORS 1, 2, 3

Apartment No.	101/ 201/ 301	102/ 202/ 203	103/ 203/ 303
Bedrooms	3	2	2
Covered Indoor Area M ²	118	97	91
Covered Veranda Area M ²	24	20	29
Store Room Area M ²	4.4	4.6	4.5
Covered Parking Spaces	1	1	1
Common Area M ²	19	16	15
Total Covered Area M ²	165.4	137.6	139.5



BUILDING C PENTHOUSES

Apartment No.	401	402
Bedrooms	3+1	3+1
Covered Indoor Area M ²	135	140
Covered Veranda Area M ²	35	45
Store Room Area M ²	8.4	6.3
Covered Parking Spaces	2	2
Roof Top Pool Area - (Uncovered) M ²	105	97
Common Area M ²	22	25
Total Covered Area M ²	200.4	216.3
Private Roof Top Pool	Yes	Yes

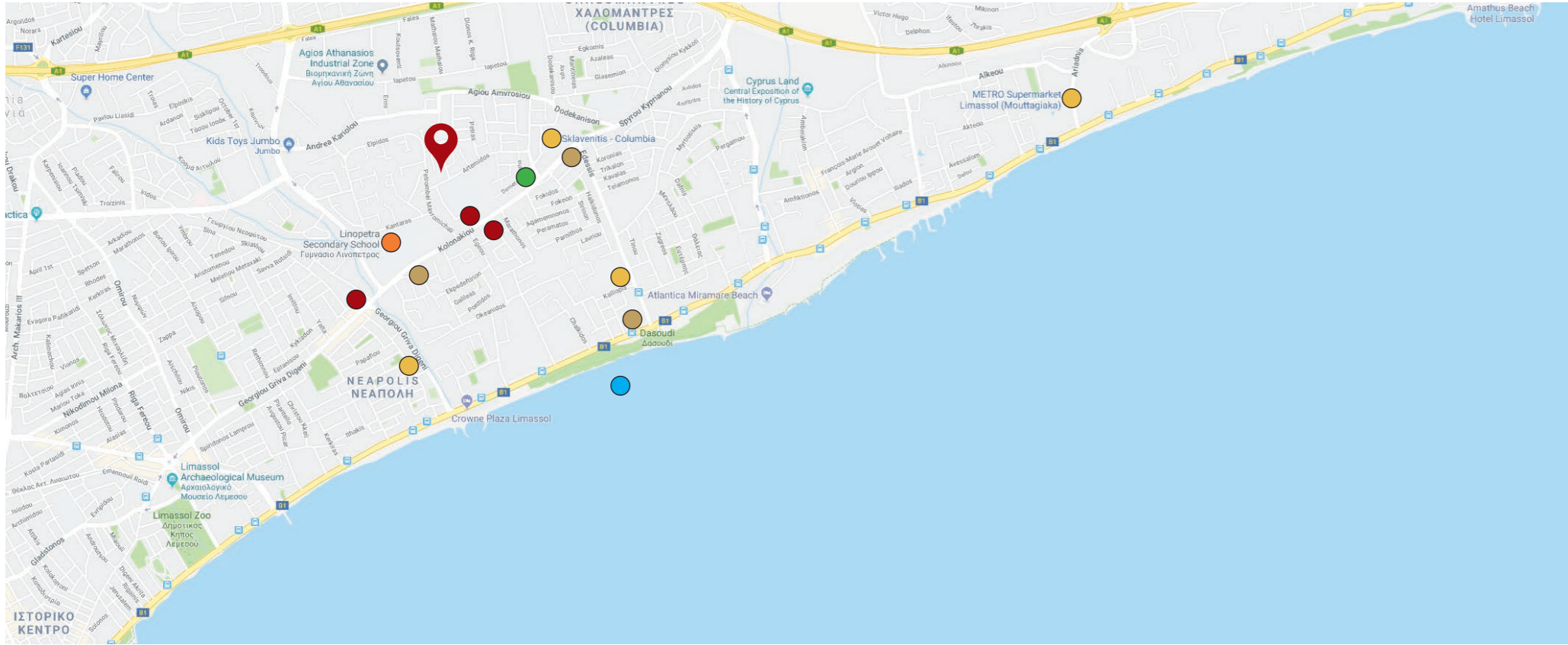
4th Floor &
Roof Terrace





PENTHOUSES
ROOF TERRACE





LOCATION

Limassol, Cyprus can entertain, engage and amuse for a lifetime. It is the perfect place for everyone; from young to children to globe-trotting businessmen. Whether you seek peace and tranquility or adventure and excitement there are a multitude of possibilities to choose from, such as a selection of beautiful sandy beaches, numerous picturesque villages, ancient monuments and majestic mountains.

“The Palm Residence” unique residential address located in the exclusive Columbia Area of Limassol, in the heart of Cyprus’ most cosmopolitan destination.

POINTS OF INTEREST

- 📍 The Palm Residence
- Banks - *approx. 180m*
- Schools - *approx 180m*
- Supermarkets - *approx 300m*
- Medical Center - *approx 200m*
- Restaurants - *approx 200m*
- Beach - *approx 1000m*



WHO WE ARE

Stylianides Group was established in 1997 by Christoforos C. Stylianides, a qualified Architect and Civil Engineer. The Group has since grown to become one of the most respected Construction & Development Company’s in Cyprus today.

The Group consists of dedicated Companies specializing in their field of expertise and covers every aspect of the Real Estate Industry. Specializing in design & development, construction & engineering, interior & landscape design, marketing & sales, consulting & project management of Commercial & Residential Projects.

OUR PHILOSOPHY

Total commitment and dedication to offering the best quality of products and highest standard of service.

- **quality:** offering the best possible products and services to all our clients.
- **integrity:** honesty and respect in all our dealings, building long term relationships with our clients and associates
- **dedication:** professional approach, understanding our clients, implementing new ideas & innovations



STYLIANIDES GROUP

38, Spyrou Kyprianou Avenue, CCS Building, 4154 Limassol, Cyprus,
P.O.Box 55050, 3820 Limassol, Cyprus
T. 70003004 | F. +357 25 389755
info@stylianidesgroup.com

Whilst all care has been taken, the information contained herein is for indicative purposes and a guide only and does not constitute an offer, warranty or contract. All computer generated images and representations are indicative only. Changes may be made during the further planning or development stages; and thus subject to change without notice. E & O.E.