

PISSOURI

HOUSES ON THE HILL

Discover your new home

DISCOVER

YOUR NEW HOME

Discover the epitome of Mediterranean living in Pissouri, Cyprus. Nestled between Limassol and Paphos, this picturesque village offers a harmonious blend of traditional charm and modern comfort. Our residences provide a unique living experience.

Pissouri's historic village square and cobblestone streets invite you to immerse yourself in the local culture, while nearby Pissouri Bay offers sun-soaked beaches and water sports. Enjoy a mild climate year-round and explore the natural beauty of the Akamas Peninsula and Troodos Mountains.

Your new home in Pissouri awaits, promising a tranquil lifestyle amidst the captivating beauty of this Cypriot paradise.



the exterior







DISCOVER
AN IDEAL PLACE
TO LIVE
WORK
INVEST

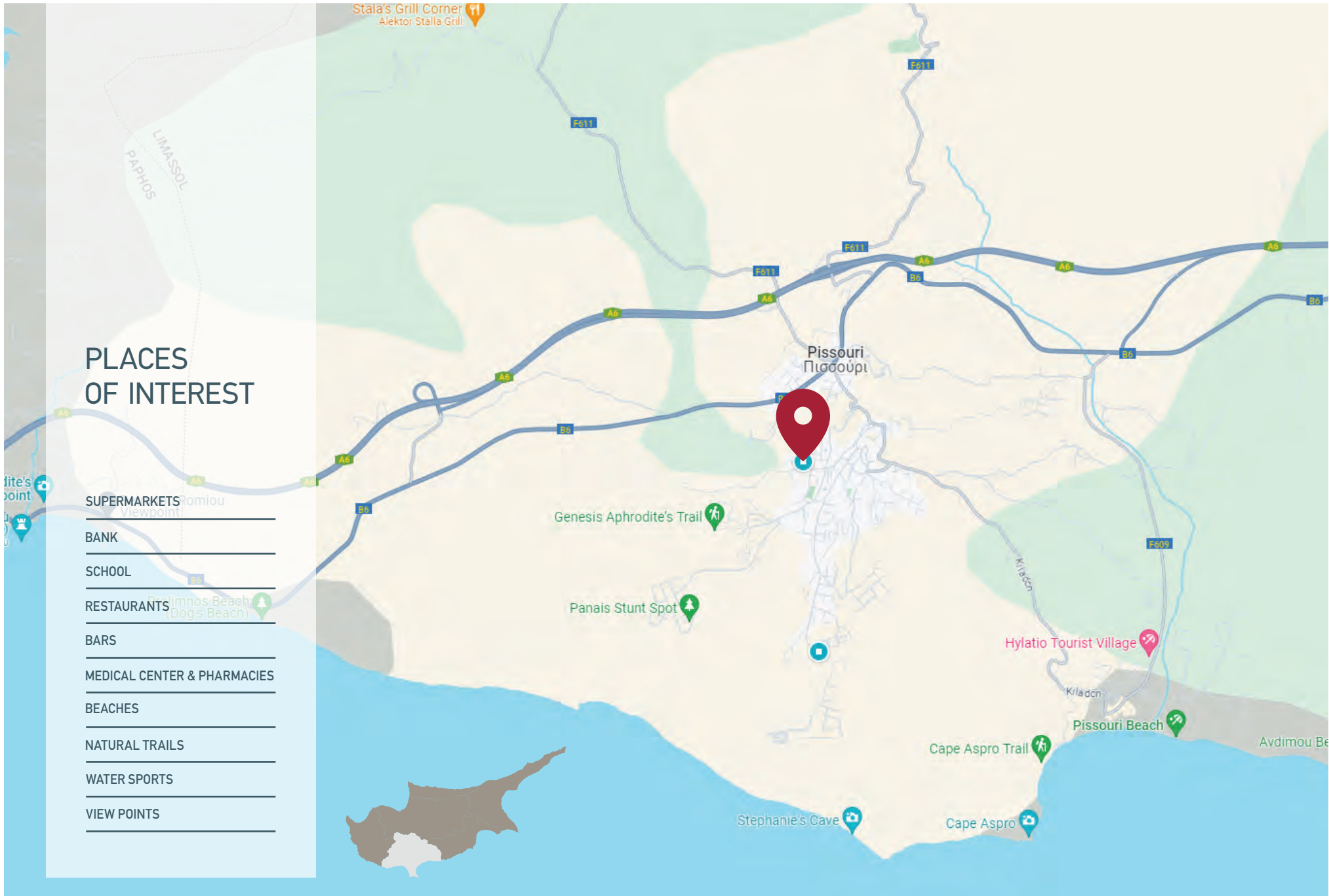
Pissouri is witnessing a surge in housing development, with two houses under construction. The landscape is dotted with construction sites, indicating a growing real estate market. These new homes blend modern design with the traditional charm of the area. As the community expands, residents can anticipate updated amenities and a fresh appeal to the already picturesque village. The construction boom reflects the increasing popularity of Pissouri as a desirable place to live, promising a blend of contemporary living within the tranquility of this Mediterranean haven.

TRANQUILITY

HARMONY SERENITY

Living in Pissouri offers a tranquil Mediterranean lifestyle with picturesque views, traditional charm, and a welcoming community. The village provides a peaceful atmosphere, authentic local cuisine, and easy access to the beautiful Pissouri Bay. With mild winters and hot summers, residents enjoy a comfortable climate year-round. The proximity to Limassol adds convenience for those seeking more urban experiences, making Pissouri an ideal blend of serenity and accessibility.





HOUSE 01

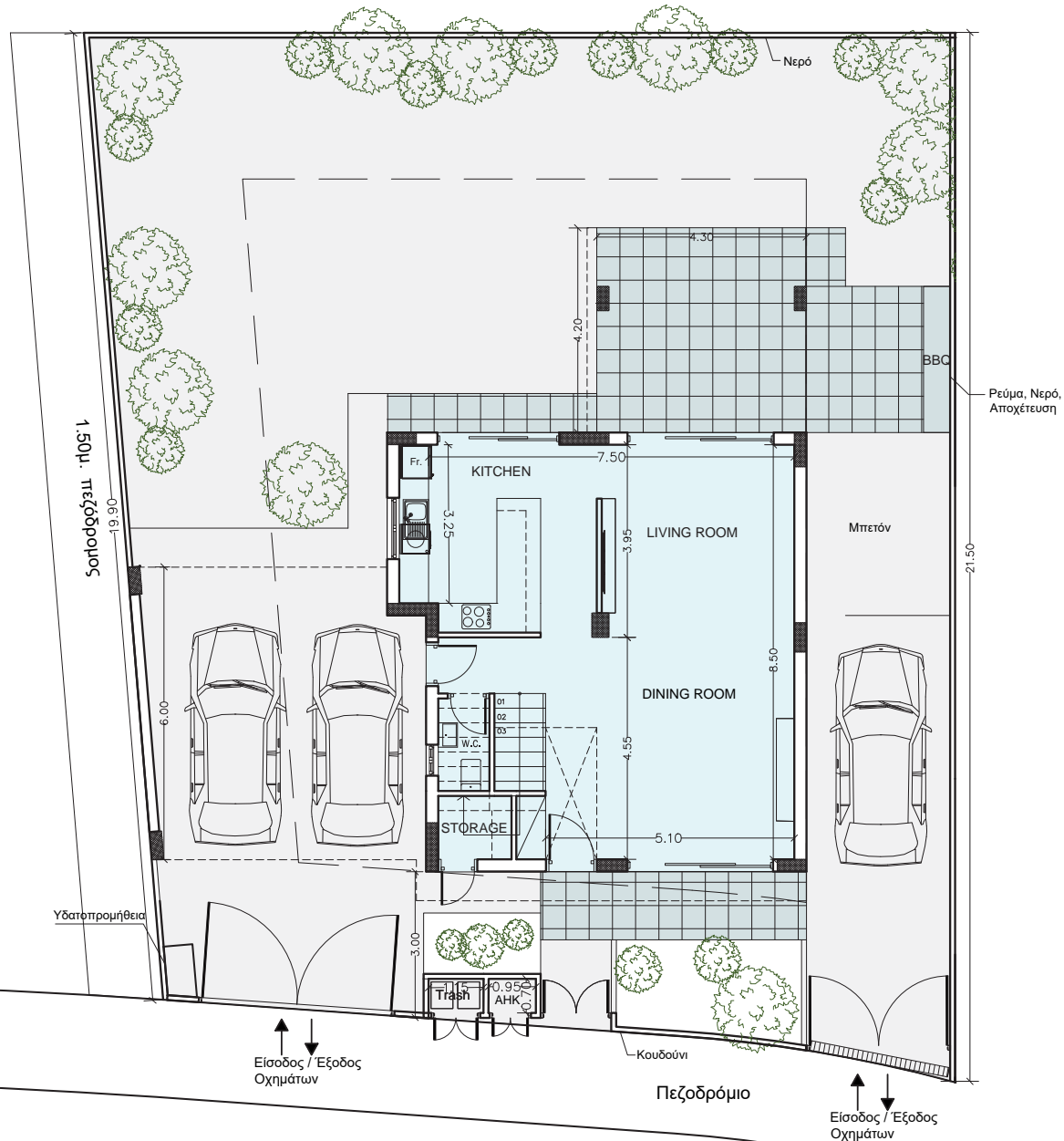


HOUSE 02



HOUSE No.01

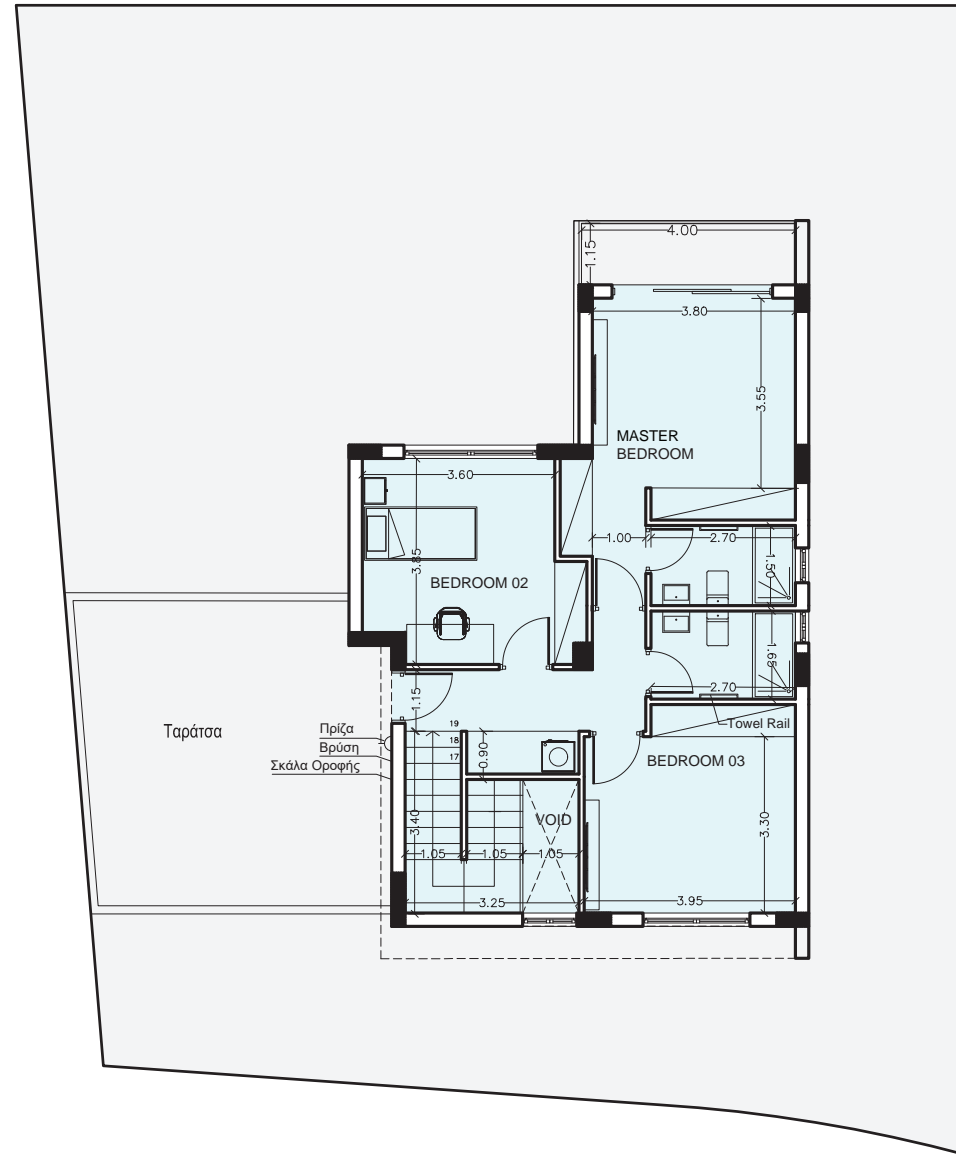
Ground Floor



HOUSE No.	BEDROOMS	PLOT SIZE m ²	INTERNAL COVERED AREA m ²	COVERED VERANDA AREA m ²	COVERED PARKING AREA m ²	TOTAL AREA m ²
01	3	349	152	22	34,45	214

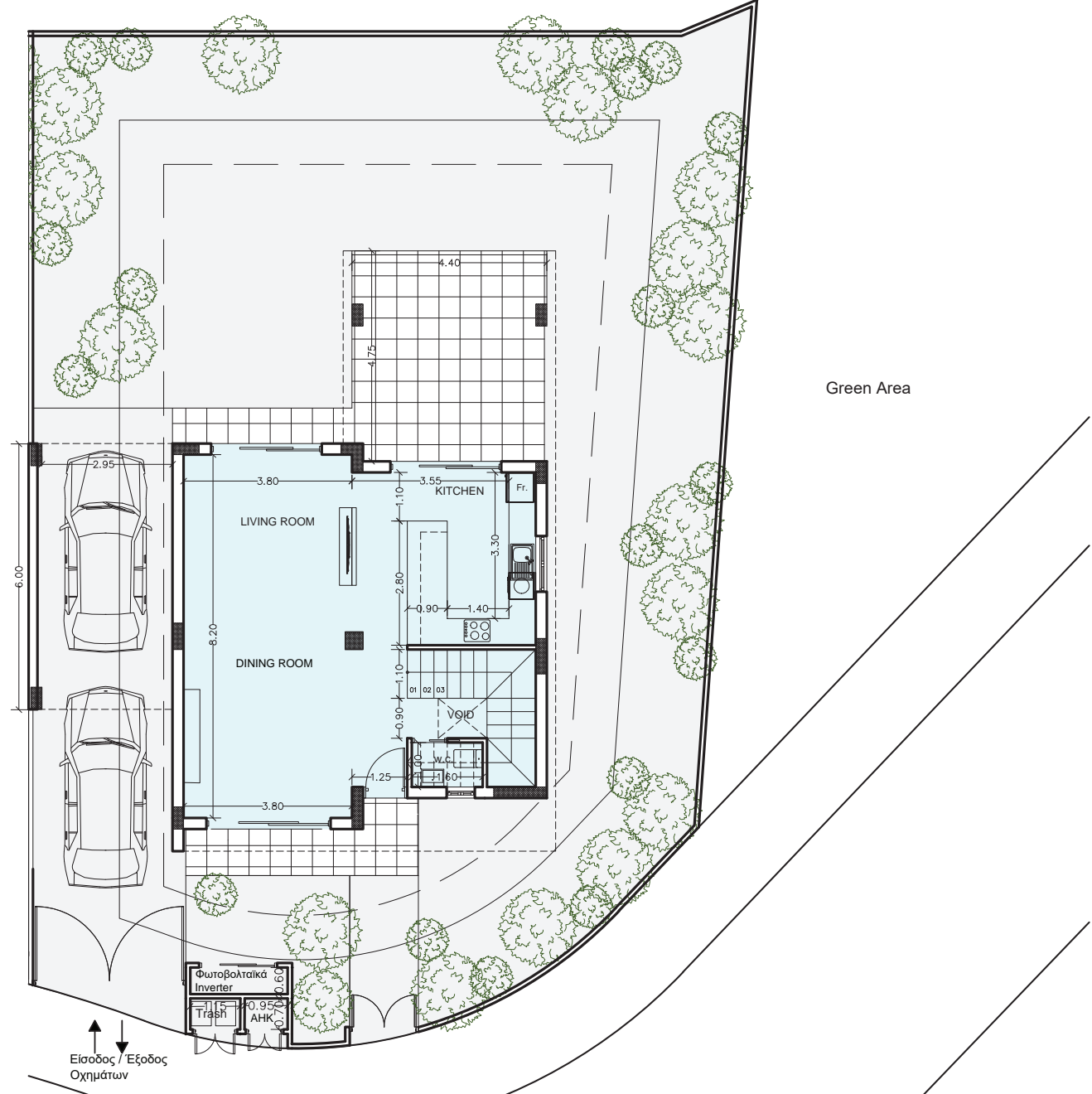
HOUSE No.01

1ST Floor



HOUSE No.02

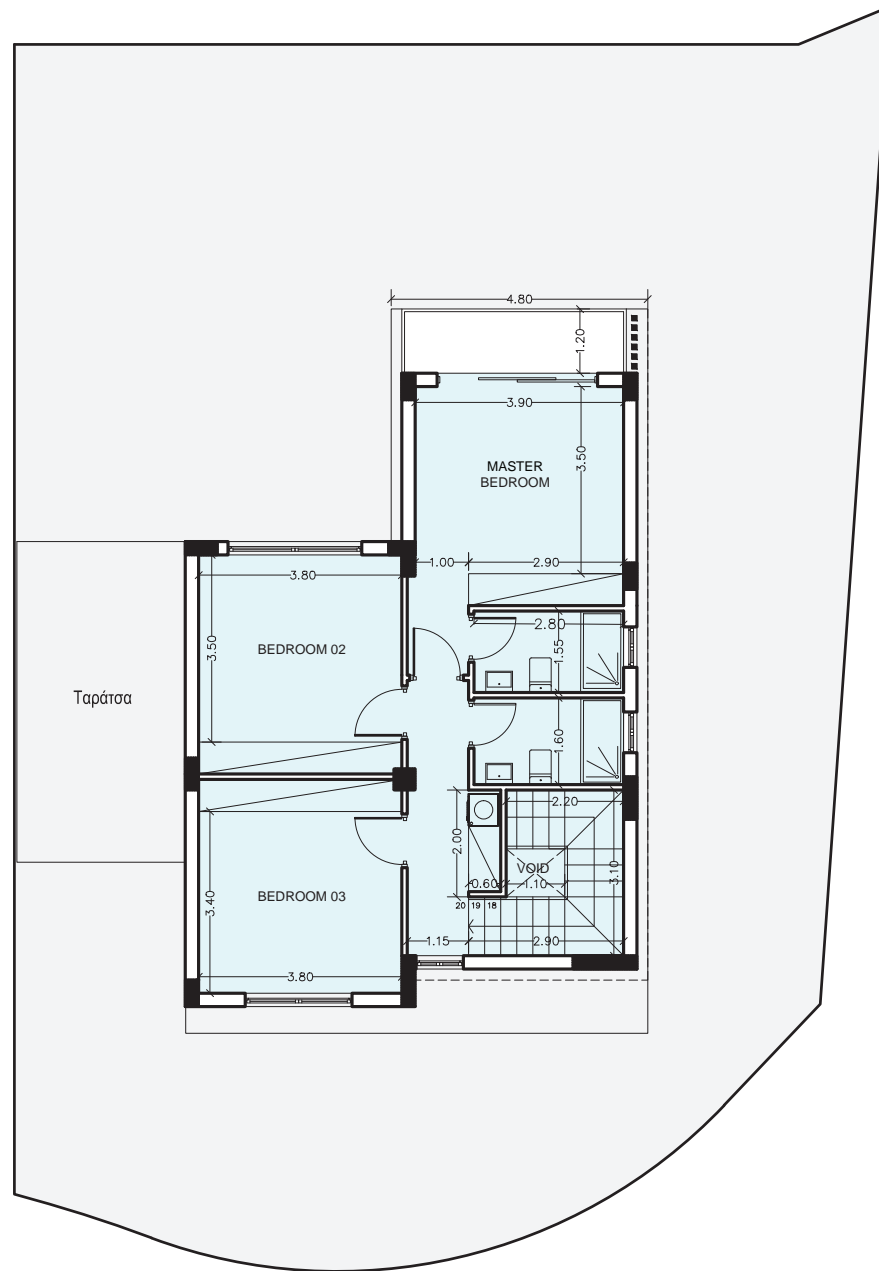
Ground Floor



HOUSE No.	BEDROOMS	PLOT SIZE m ²	INTERNAL COVERED AREA m ²	COVERED VERANDA AREA m ²	COVERED PARKING AREA m ²	TOTAL AREA m ²
02	3	340	153	27	19	199

HOUSE No.02

1ST Floor







DISCOVER
STYLISH LIVING

Embark on a journey of stylish living, where every detail is a brushstroke of elegance and every space tells a story of modern sophistication. Our residences redefine the art of living with a curated blend of contemporary design and timeless luxury. From chic interiors to tasteful aesthetics, discover a haven where comfort meets trendsetting style. Each corner reflects a commitment to seamless, exclusive living, creating a uniquely refined ambiance that resonates with those who appreciate the finer things in life. Welcome to a world where every moment is infused with the essence of stylish living.





STYLIANIDES GROUP
DEVELOPERS · CONTRACTORS · ARCHITECTS

T: 7000 3004 | +357 25325130 | F: +357 25389755 | E: info@stylianidesgroup.com

WWW.STYLIANIDESGROUP.COM

Whilst all care has been taken, the information contained herein is for indicative purposes and a guide only and does not constitute an offer, warranty or contract. All computer generated images and representations are indicative only. Changes may be made during the further planning or development stages, and thus subject to change without notice. E & O.E.